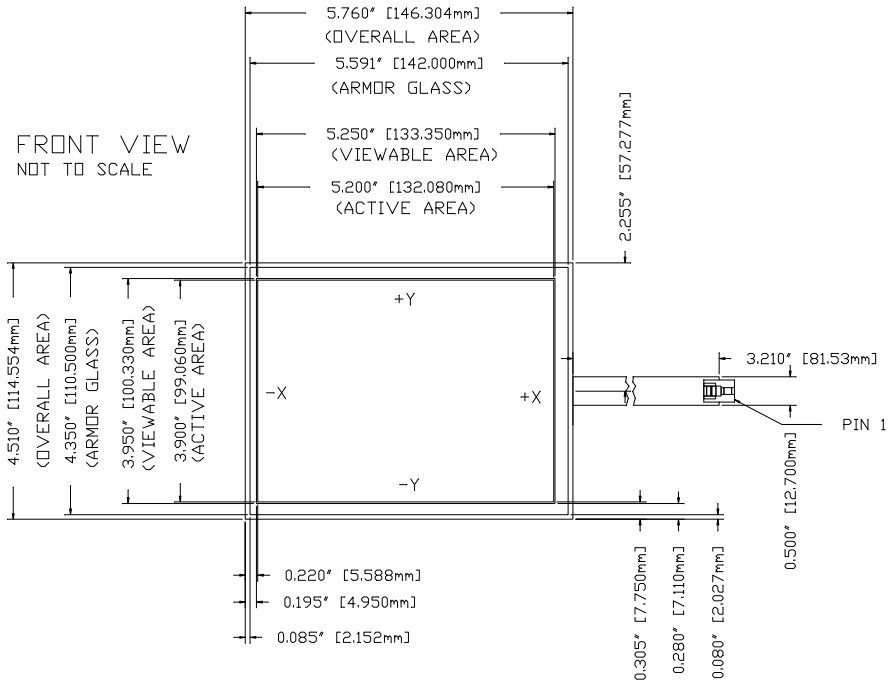
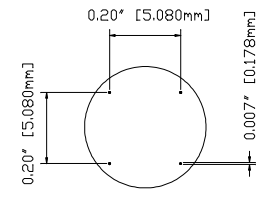


NOT TO SCALE
 ALL DIMENSIONS ARE UNLESS OTHERWISE SPECIFIED IN MILLIMETERS AND DECIMALS THEREOF.
 DIMENSIONS ARE TO CENTER UNLESS OTHERWISE SPECIFIED.
 DIMENSIONS ARE TO CENTER UNLESS OTHERWISE SPECIFIED.
 DIMENSIONS ARE TO CENTER UNLESS OTHERWISE SPECIFIED.

| REVISIONS | | | |
|-----------|---------------------------------|----------|----|
| LET | DESCRIPTION | DATE | BY |
| A | INITIAL RELEASE | 10-08-08 | DZ |
| B | UPDATE DRAWING INFORMATION | 07-13-09 | DZ |
| C | EDIT SUBSTRATE WIDTH | 09-25-09 | DZ |
| D | ADD ARMOR GLASS & MOD THICKNESS | 09-25-09 | DZ |



| PIN | DESC |
|-----|------|
| 1 | -Y |
| 2 | +X |
| 3 | +Y |
| 4 | -X |

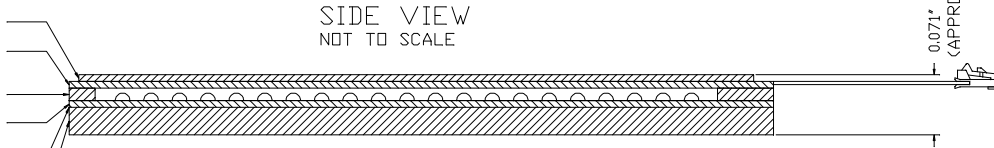


DETAIL A
SCALE 5:1

NOTES:

1. SUBSTRATE: 1.1MM CHEMICALLY STRENGTHENED GLASS
2. ALL DIMENSIONS IN INCHES [MILLIMETERS]
3. SAFETY SEAM ON ALL EDGES
4. CABLE: INTEGRATED POLYESTER TAIL
5. CONNECTOR: AMP TYPE WITH 0.1" [2.54MM] CENTERS, LATCHING, PART NUMBER 487526-3
6. TOUCH SCREEN TO BE ACTIVATED WITHIN ACTIVE AREA ONLY. AREA BETWEEN ACTIVE AND VIEWABLE AREAS MUST HAVE A SCREENED ON DIELECTRIC AND CONDENSED DOTS.
7. TOTAL SENSOR THICKNESS: 0.071" [1.800MM] APPROXIMATE

- 0.1MM BOROSILICATE GLASS
- 0.188MM TOP ITO FILM
- 0.08MM 3M7953 SPACER ADHESIVE
- 0.188MM BOTTOM ITO FILM
- OPTICALLY CLEAR ADHESIVE
- 1.1MM CHEMICALLY STRENGTHENED GLASS



| | | | |
|--|---|--|---------------------------------|
| | | A 3 METRO - 1181 PARSIEEN ST - OTTAWA, ONTARIO | |
| AD6.5ULTRA | | | |
| TOLERANCING UNLESS OTHERWISE SPECIFIED DEC INCHES ANGLES 45P 10 NOT SCALE DRAWING | DRAWN BY DZ DAVID 03-14-11 PROJECT NAME | PROJECT/ASSET NO. -- PROJECT NO. AD-6.5-4RU-200 | SCALE SCALE SHEET 1 SHEETS 1 |