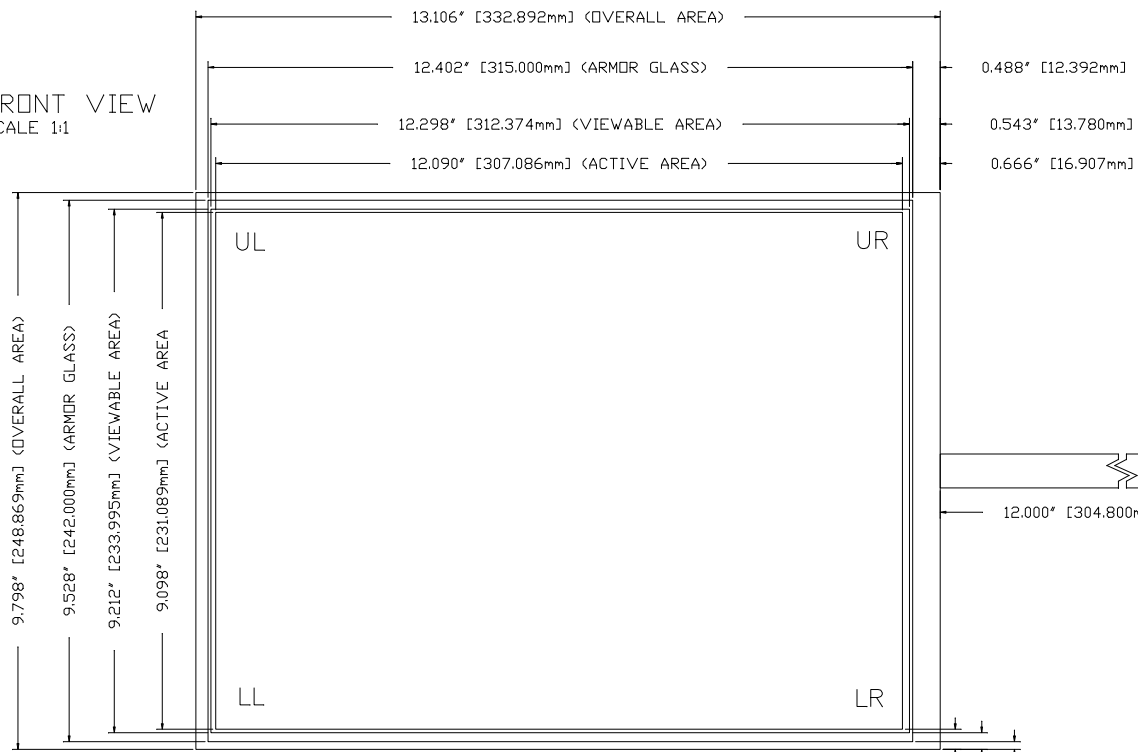


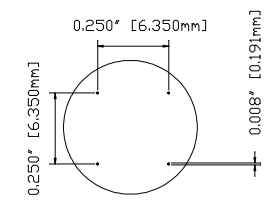
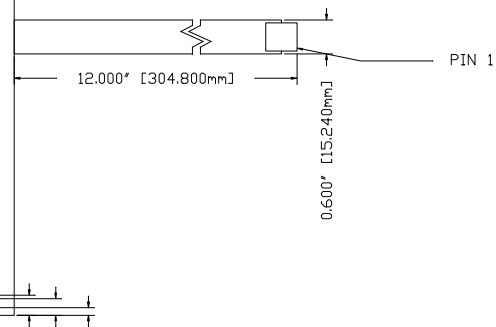
THIS DRAWING AND ALL INFORMATION CONTAINED HEREIN IS THE PROPERTY OF AD METRO. IT IS TO BE USED FOR THE MANUFACTURE OF THE PRODUCT SPECIFICALLY IDENTIFIED HEREIN. IT IS NOT TO BE REPRODUCED, COPIED, OR TRANSMITTED IN ANY FORM OR BY ANY MEANS, ELECTRONIC OR MECHANICAL, INCLUDING PHOTOCOPYING, RECORDING, OR BY ANY INFORMATION STORAGE AND RETRIEVAL SYSTEM, WITHOUT THE WRITTEN PERMISSION OF AD METRO. ALL RIGHTS ARE RESERVED.

REVISIONS			
LET	DESCRIPTION	DATE	BY
A	INITIAL RELEASE	04-25-12	DZ

FRONT VIEW
SCALE 1:1



PIN	X1
1	LL
2	UL
3	SENSE
4	LR
5	UR



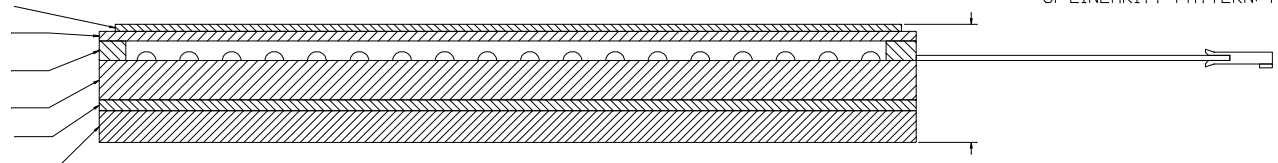
DETAIL A - DOT SPEC
SCALE 5:1

NOTES:

1. SUBSTRATE: 3.18MM ITO GLASS.
2. ALL DIMENSIONS IN INCHES [MILLIMETERS].
3. SAFETY SEAM ON ALL EDGES.
4. CABLE: 5-PIN FPC TYPE.
5. CONNECTOR: AMP TYPE WITH 0.1" [2.54MM] CENTERS, NON LATCHING, PART NUMBER 487378-4.
6. TOUCH SCREEN TO BE ACTIVATED WITHIN ACTIVE AREA ONLY. AREA BETWEEN ACTIVE AND VIEWABLE AREAS MUST HAVE A SCREENED ON DIELECTRIC.
7. TOTAL SENSOR THICKNESS: 0.276" [7.000MM].
8. LINEARITY PATTERN: PEPPER.

SIDE VIEW
NOT TO SCALE

- 0.1 MM BORSILICATE GLASS
- 0.188MM A/G POLYESTER FILM
- SPACER ADHESIVE
- 3.18MM ITO GLASS
- 0.4MM LAMINATION BONDLINE
- 3.0MM CHEMICALLY STRENGTHENED GLASS



0.276" [7.000mm]
(APPROXIMATE)

		A 3 METRO - 1181 PARSIFEN ST - OTTAWA, ONTARIO	
AD15.0ULTRA			
TOLERANCING UNLESS OTHERWISE SPECIFIED 0.004mm ANGLES AS SH	DRAWN BY: DZ DATE: 04-25-12 PROJECT NAME:	PROJECT/ASSET NO.: SHEET: 1 SHEETS: 1	SCALE SHEET: 1 SHEETS: 1
30 NET SCALE DRAWING		PART NO.: 3A99153-C30	